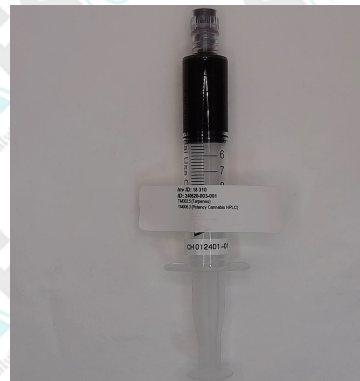


## Certificate of Analysis

**Sample ID:** 240620-003-001  
**Retention Sample ID:** 18 310  
**Client (Code) Name:** (CAN0376) Mercurial (Pty) Ltd  
**Client Address:** 25 Renosterkop, Nelspruit  
**Batch:** 012401-01 (Cheese OG)  
**Date Receipt:** 2024/06/20 11:41:10  
**Date Report Released:** 2024/06/26 14:44:22  
**Sample Type:** Extract  
**Package Condition:** Intact  
**Received By:** TSTRYDOM  
**Sample Amount:** 4 gram  
**Tamper Proof:** Yes



## Requested Test Panel

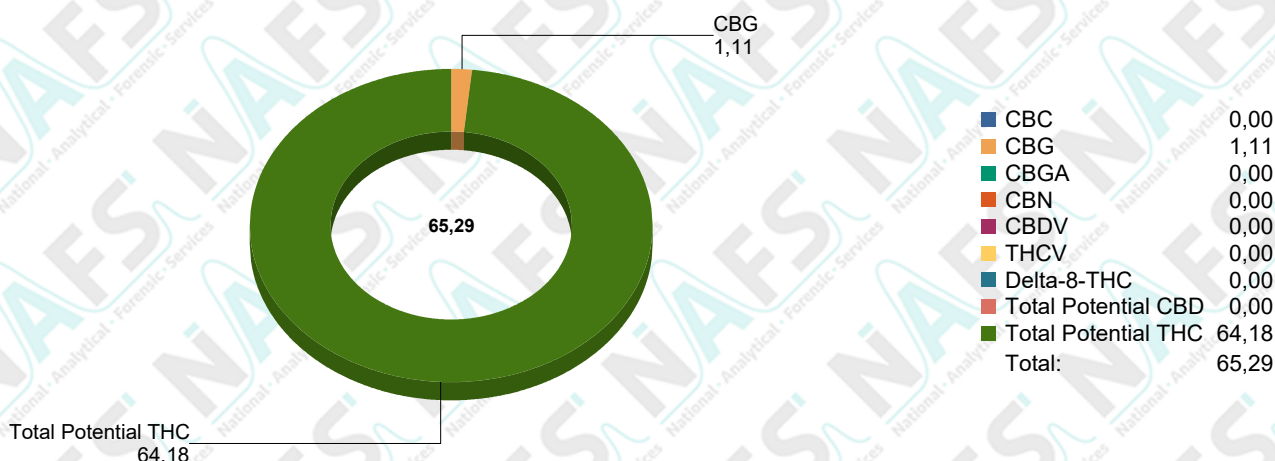
- TM006.3 (Potency Cannabis HPLC)
- TM003.5 (Terpenes)

## Test Results

**Test Name:** TM006.3 (Potency Cannabis HPLC) (240620-003-001)  
**Specification:** N/A  
**Test Method:** \*TM006.3  
**Sub-sampling Method:** SH007

Analyte	Results	*Std Dev.	*Spec Limits
CBC	ND % Weight	% Weight	N/A
CBC-A	ND % Weight	% Weight	N/A
CBD	ND % Weight	% Weight	N/A
CBD-A	ND % Weight	% Weight	N/A
CBD-V	ND % Weight	% Weight	N/A
CBDV-A	ND % Weight	% Weight	N/A
CBG	1.109 % Weight	+ - 0.064 % Weight	N/A
CBG-A	ND % Weight	% Weight	N/A
CBN	ND % Weight	% Weight	N/A
CBN-A	ND % Weight	% Weight	N/A
Delta-8-THC	ND % Weight	% Weight	N/A
Delta-9-THC	50.308 % Weight	+ - 0.109 % Weight	N/A
THC-A	15.818 % Weight	+ - 0.199 % Weight	N/A
THC-V	ND % Weight	% Weight	N/A
THCV-A	ND % Weight	% Weight	N/A
Total Potential CBD	ND % Weight	% Weight	N/A
Total Potential THC	64.181 % Weight	+ - 0.284 % Weight	N/A

**Analyst:** ENAUDE 2024/06/26 12:54



\*ND (Not Detected)  
 \*The current test method version is Validated  
 \*Standard Deviation (Uncertainty of measurement of applicable duplicate sample)  
 \*Specification Limits (Specified according to pharmacopeial or client specification limits where applicable)

## Test Results

**Test Name:** TM003.5 (Terpenes) (240620-003-001)

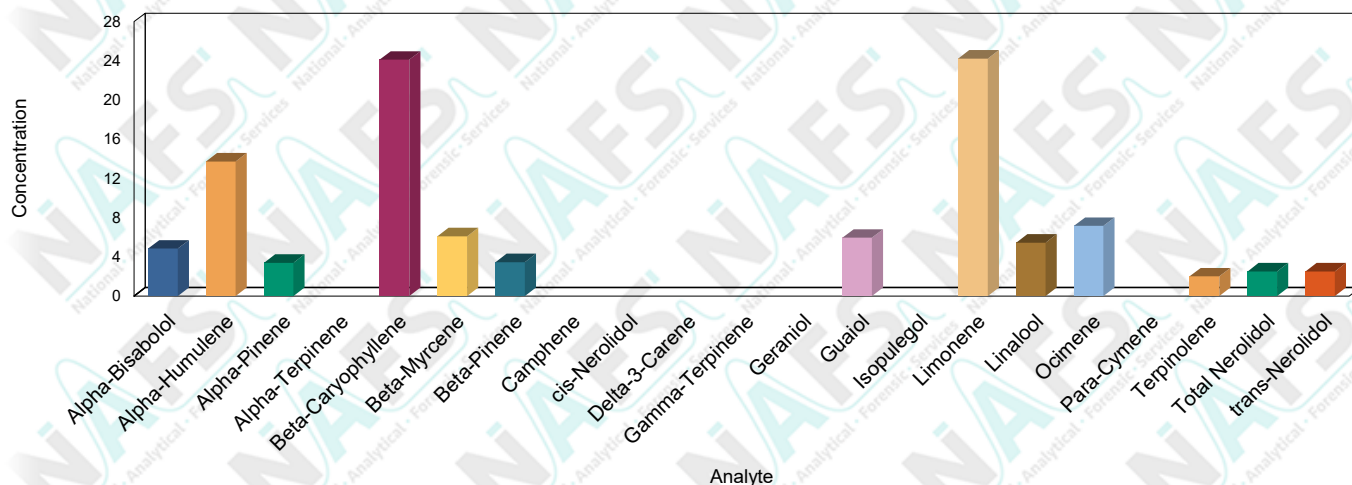
**Specification:** N/A

**Test Method:** \*TM003.5

**Sub-sampling Method:** SH007

Analyte	Results	*Std Dev.	*Spec Limits
Alpha-Bisabolol	4.854 mg/g	+ 0.006 mg/g	N/A
Alpha-Humulene	13.740 mg/g	+ 0.008 mg/g	N/A
Alpha-Pinene	3.401 mg/g	+ 0.007 mg/g	N/A
Alpha-Terpinene	ND mg/g	mg/g	N/A
Beta-Caryophyllene	24.119 mg/g	+ 0.044 mg/g	N/A
Beta-Myrcene	6.102 mg/g	+ 0.006 mg/g	N/A
Beta-Pinene	3.469 mg/g	+ 0.002 mg/g	N/A
Camphene	ND mg/g	mg/g	N/A
cis-Nerolidol	ND mg/g	mg/g	N/A
Delta-3-Carene	ND mg/g	mg/g	N/A
Gamma-Terpinene	ND mg/g	mg/g	N/A
Geraniol	ND mg/g	mg/g	N/A
Guaiol	5.962 mg/g	+ 0.002 mg/g	N/A
Isopulegol	ND mg/g	mg/g	N/A
Limonene	24.239 mg/g	+ 0.025 mg/g	N/A
Linalool	5.464 mg/g	+ 0.022 mg/g	N/A
Ocimene	7.165 mg/g	+ 0.001 mg/g	N/A
Para-Cymene	ND mg/g	mg/g	N/A
Terpinolene	2.019 mg/g	+ 0.001 mg/g	N/A
Total Nerolidol	2.523 mg/g	+ 0.001 mg/g	N/A
trans-Nerolidol	2.523 mg/g	+ 0.001 mg/g	N/A

**Analyst:** ANAIDOO 2024/06/26 11:21



\*ND (Not Detected)

\*The current test method version is Validated

\*Standard Deviation (Uncertainty of measurement of applicable duplicate sample)

\*Specification Limits (Specified according to pharmacopeial or client specification limits where applicable)



## Interpretations and Opinions:

There was matrix interference detected within the retention windows of Alpha-Humulene, Alpha-Bisabolol and Beta-Caryophyllene. This could result in the reported values being higher or lower than the actual values. This sample was prepared to obtain the highest accuracy of major analytes. Thus, the minor analyte results reported are subjected to dilution effects and therefore possible variance.

## Additions, Deviations & Exclusions:

None

*It should be noted that NAFS will only analyze the sample/s received. This sample cannot be regarded as representative of entire batch or crop. It is the responsibility of the client to ensure a representative sample is taken in an appropriate tamper proof sample container. NAFS cannot be held liable for negligent handling, storage and transport of client samples, prior to receipt. Any complaints may be directed toward NAFS using info@nafs.co.za (QA005)*

## Quality Assurance Manager

**Released By:** Lindie Marais

**Released On:** 2024/06/26 14:44:22

*This certificate of analysis shall not be reproduced except in full, without written approval of NAFS. The information contained in this communication from the sender is confidential. It is intended solely for use by the recipient and others authorized to receive it. If you are not the recipient, you are hereby notified that any disclosure, copying, distribution or taking action in relation of the contents of this information is strictly prohibited and may be unlawful. The results obtained may be used for anonymous statistical research purposes. NAFS cannot be held liable for any loss or damage arising from, directly or indirectly related to, sample test results.*