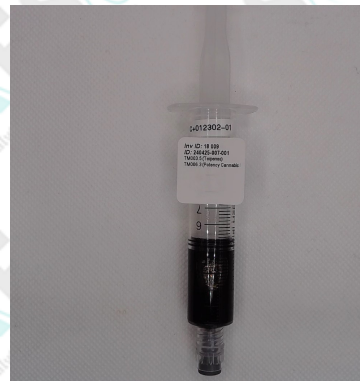


Certificate of Analysis

Sample ID: 240425-007-001
Retention Sample ID: 18 009
Client (Code) Name: (CAN0376) Mercurial (Pty) Ltd
Client Address: 25 Renosterkop, Nelspruit
Batch: C+ 012302-01 (Critical + Full Spectrum Extract)
Date Receipt: 2024/04/29 08:29:36
Date Report Released: 2024/05/13 08:29:40
Sample Type: Extract
Package Condition: Intact
Received By: TSTRYDOM
Sample Amount: 1 gram
Tamper Proof: No



Requested Test Panel

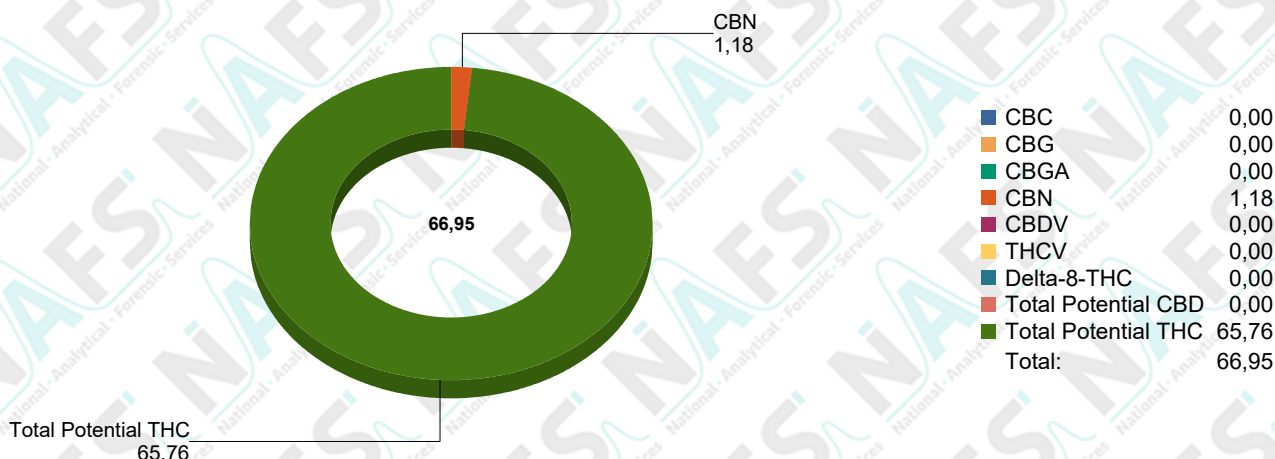
- TM006.3 (Potency Cannabis HPLC)
- TM003.5 (Terpenes)

Test Results

Test Name: TM006.3 (Potency Cannabis HPLC) (240425-007-001)
Specification: N/A
Test Method: *TM006.3
Sub-sampling Method: SH007

Analyte	Results	*Std Dev.	*Spec Limits
CBC	ND % Weight	% Weight	N/A
CBC-A	ND % Weight	% Weight	N/A
CBD	ND % Weight	% Weight	N/A
CBD-A	ND % Weight	% Weight	N/A
CBD-V	ND % Weight	% Weight	N/A
CBDV-A	ND % Weight	% Weight	N/A
CBG	ND % Weight	% Weight	N/A
CBG-A	ND % Weight	% Weight	N/A
CBN	1.182 % Weight	+ - 0.004 % Weight	N/A
CBN-A	ND % Weight	% Weight	N/A
Delta-8-THC	ND % Weight	% Weight	N/A
Delta-9-THC	53.055 % Weight	+ - 1.972 % Weight	N/A
THC-A	14.493 % Weight	+ - 0.589 % Weight	N/A
THC-V	ND % Weight	% Weight	N/A
THCV-A	ND % Weight	% Weight	N/A
Total Potential CBD	ND % Weight	% Weight	N/A
Total Potential THC	65.765 % Weight	+ - 2.488 % Weight	N/A

Analyst: ENAUDE 2024/05/08 11:05



*ND (Not Detected)
 *The current test method version is Validated
 *Standard Deviation (Uncertainty of measurement of applicable duplicate sample)
 *Specification Limits (Specified according to pharmacopeial or client specification limits where applicable)

Test Results

Test Name: TM003.5 (Terpenes) (240425-007-001)

Specification: N/A

Test Method: *TM003.5

Sub-sampling

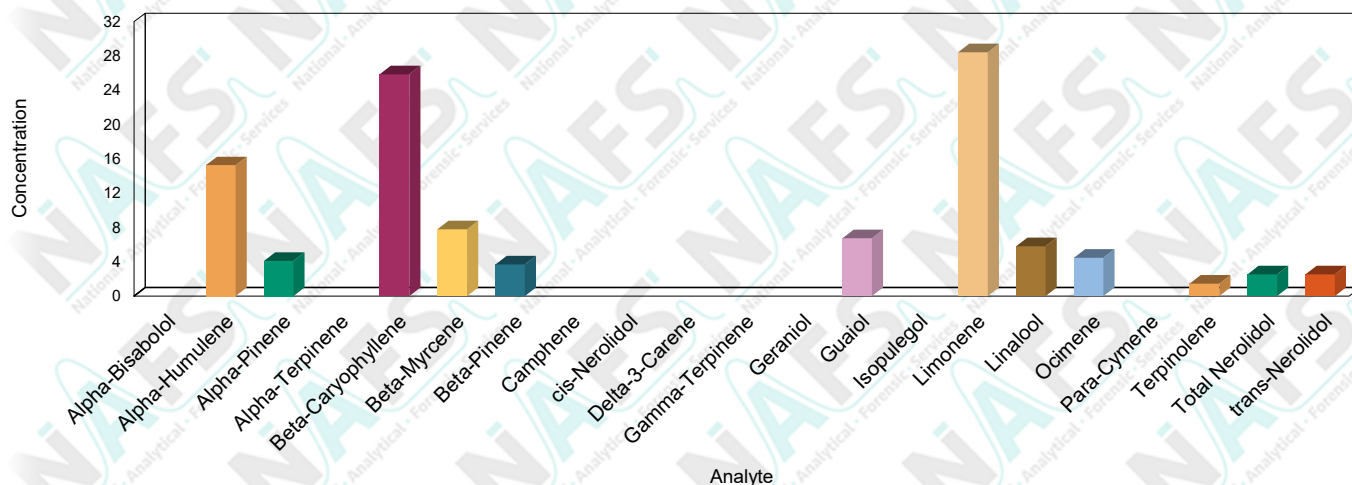
SH007

Method:

Analyte	Results	*Std Dev.	*Spec Limits
---------	---------	-----------	--------------

Alpha-Bisabolol	ND mg/g	mg/g	N/A
Alpha-Humulene	15.266 mg/g	+ 0.025 mg/g	N/A
Alpha-Pinene	4.111 mg/g	+ 0.007 mg/g	N/A
Alpha-Terpinene	ND mg/g	mg/g	N/A
Beta-Caryophyllene	25.880 mg/g	+ 0.018 mg/g	N/A
Beta-Myrcene	7.805 mg/g	+ 0.015 mg/g	N/A
Beta-Pinene	3.713 mg/g	+ 0.002 mg/g	N/A
Camphene	ND mg/g	mg/g	N/A
cis-Nerolidol	ND mg/g	mg/g	N/A
Delta-3-Carene	ND mg/g	mg/g	N/A
Gamma-Terpinene	ND mg/g	mg/g	N/A
Geraniol	ND mg/g	mg/g	N/A
Guaiol	6.745 mg/g	+ 0.013 mg/g	N/A
Isopulegol	ND mg/g	mg/g	N/A
Limonene	28.452 mg/g	+ 0.008 mg/g	N/A
Linalool	5.830 mg/g	+ 0.008 mg/g	N/A
Ocimene	4.487 mg/g	+ 0.009 mg/g	N/A
Para-Cymene	ND mg/g	mg/g	N/A
Terpinolene	1.468 mg/g	+ 0.025 mg/g	N/A
Total Nerolidol	2.541 mg/g	+ 0.011 mg/g	N/A
trans-Nerolidol	2.541 mg/g	+ 0.011 mg/g	N/A

Analyst: ENAUDE 2024/05/10 14:03



*ND (Not Detected)

*The current test method version is Validated

*Standard Deviation (Uncertainty of measurement of applicable duplicate sample)

*Specification Limits (Specified according to pharmacopeial or client specification limits where applicable)



Interpretations and Opinions:

There was matrix interference detected within the retention windows of alpha-Humulene, beta-Caryophyllene, Guaiol and trans-Nerolidol. This could result in the reported values being either higher or lower than the actual values. This sample was prepared to obtain the highest accuracy of the major analyte. Thus, the minor analyte results reported are subject to dilution effects and therefore possible variance.

Additions, Deviations & Exclusions:

None

It should be noted that NAFS will only analyze the sample/s received. This sample cannot be regarded as representative of entire batch or crop. It is the responsibility of the client to ensure a representative sample is taken in an appropriate tamper proof sample container. NAFS cannot be held liable for negligent handling, storage and transport of client samples, prior to receipt. Any complaints may be directed toward NAFS using info@nafs.co.za (QA005)

Quality Assurance Manager

Released By: Lindie Marais

Released On: 2024/05/13 08:29:40

This certificate of analysis shall not be reproduced except in full, without written approval of NAFS. The information contained in this communication from the sender is confidential. It is intended solely for use by the recipient and others authorized to receive it. If you are not the recipient, you are hereby notified that any disclosure, copying, distribution or taking action in relation of the contents of this information is strictly prohibited and may be unlawful. The results obtained may be used for anonymous statistical research purposes. NAFS cannot be held liable for any loss or damage arising from, directly or indirectly related to, sample test results.