

Certificate of Analysis

Sample ID: 240313-002-002
Retention Sample ID: 17,776
Client (Code) Name: (CAN0376) Mercurial (Pty) Ltd
Client Address: 25 Renosterkop, Nelspruit
Batch: 072301-01 (Strawberry Banana - Full Spectrum E)
Date Receipt: 3/14/2024 9:27:55AM
Date Report Released: 3/28/2024 9:38:08AM
Sample Type: Extract
Package Condition: Intact
Received By: ENAUDE
Sample Amount: 4 gram
Tamper Proof: Yes



Requested Test Panel

- TM006.3 (Potency Cannabis HPLC)
- TM003.5 (Terpenes)

Test Results

Test Name: TM006.3 (Potency Cannabis HPLC) (240313-002-002)

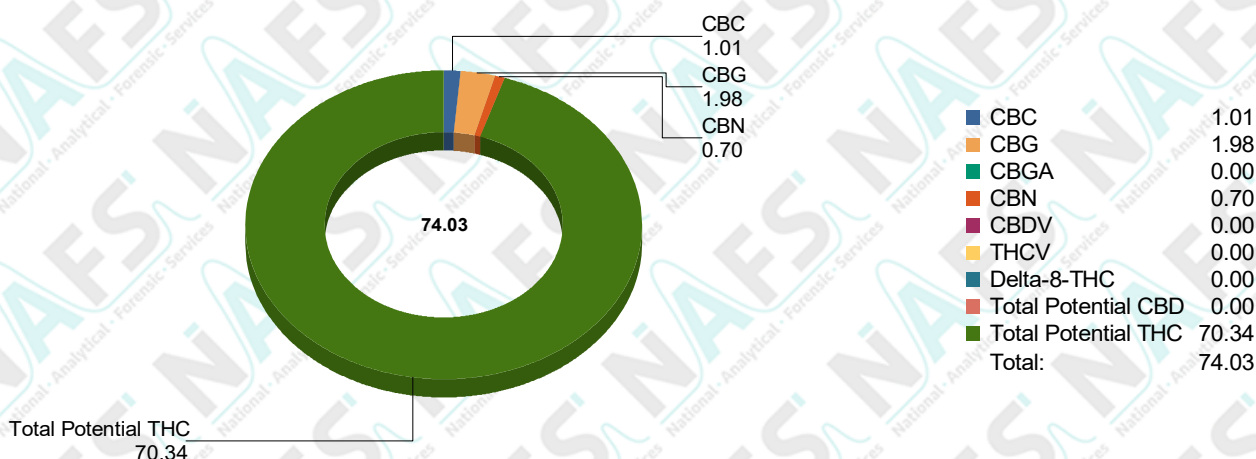
Specification: N/A

Test Method: *TM006.3

Sub-sampling Method: SH007

Analyte	Results	*Std Dev.	*Spec Limits
CBC	1.009 % Weight	+ - 0.075 % Weight	N/A
CBC-A	ND % Weight	% Weight	N/A
CBD	ND % Weight	% Weight	N/A
CBD-A	ND % Weight	% Weight	N/A
CBD-V	ND % Weight	% Weight	N/A
CBDV-A	ND % Weight	% Weight	N/A
CBG	1.977 % Weight	+ - 0.046 % Weight	N/A
CBG-A	ND % Weight	% Weight	N/A
CBN	0.699 % Weight	+ - 0.093 % Weight	N/A
CBN-A	ND % Weight	% Weight	N/A
Delta-8-THC	ND % Weight	% Weight	N/A
Delta-9-THC	55.603 % Weight	+ - 0.616 % Weight	N/A
THC-A	16.810 % Weight	+ - 0.290 % Weight	N/A
THC-V	ND % Weight	% Weight	N/A
THCV-A	ND % Weight	% Weight	N/A
Total Potential CBD	ND % Weight	% Weight	N/A
Total Potential THC	70.345 % Weight	+ - 0.870 % Weight	N/A

Analyst: TSTRYDOM 2024/03/19 13:34



*ND (Not Detected)

*The current test method version is Validated

*Standard Deviation (Uncertainty of measurement of applicable duplicate sample)

*Specification Limits (Specified according to pharmacopeial or client specification limits where applicable)

Test Results

Test Name: TM003.5 (Terpenes) (240313-002-002)

Specification: N/A

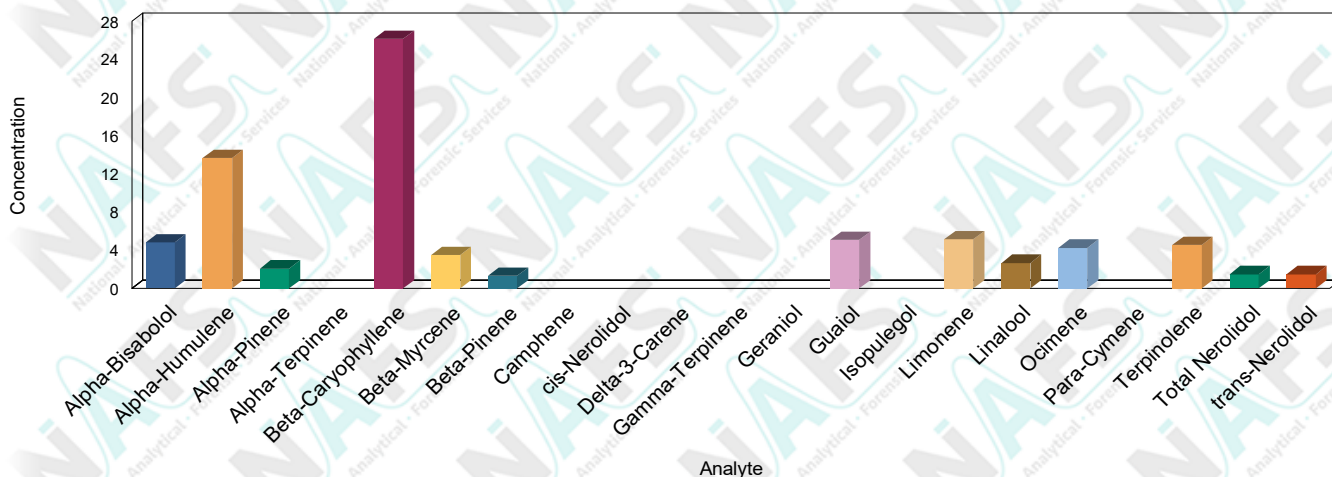
Test Method: *TM003.5

Sub-sampling Method: SH007

Analyte	Results	*Std Dev.	*Spec Limits
---------	---------	-----------	--------------

Alpha-Bisabolol	4.843 mg/g	+ 0.076 mg/g	N/A
Alpha-Humulene	13.665 mg/g	+ 0.094 mg/g	N/A
Alpha-Pinene	2.093 mg/g	+ 0.045 mg/g	N/A
Alpha-Terpinene	ND mg/g	mg/g	N/A
Beta-Caryophyllene	26.129 mg/g	+ 0.300 mg/g	N/A
Beta-Myrcene	3.526 mg/g	+ 0.017 mg/g	N/A
Beta-Pinene	1.335 mg/g	+ 0.013 mg/g	N/A
Camphene	ND mg/g	mg/g	N/A
cis-Nerolidol	ND mg/g	mg/g	N/A
Delta-3-Carene	ND mg/g	mg/g	N/A
Gamma-Terpinene	ND mg/g	mg/g	N/A
Geraniol	ND mg/g	mg/g	N/A
Guaiol	5.123 mg/g	+ 0.091 mg/g	N/A
Isopulegol	ND mg/g	mg/g	N/A
Limonene	5.164 mg/g	+ 0.032 mg/g	N/A
Linalool	2.698 mg/g	+ 0.021 mg/g	N/A
Ocimene	4.272 mg/g	+ 0.032 mg/g	N/A
Para-Cymene	ND mg/g	mg/g	N/A
Terpinolene	4.559 mg/g	+ 0.033 mg/g	N/A
Total Nerolidol	1.515 mg/g	+ 0.013 mg/g	N/A
trans-Nerolidol	1.515 mg/g	+ 0.013 mg/g	N/A

Analyst: TSTRYDOM 2024/03/28 09:28



*ND (Not Detected)

*The current test method version is Validated

*Standard Deviation (Uncertainty of measurement of applicable duplicate sample)

*Specification Limits (Specified according to pharmacopeial or client specification limits where applicable)



Interpretations and Opinions:

Matrix interference was detected within the retention windows of alpha-Bisabolol, alpha-Humulene, beta-Caryophyllene, Guaiol and Ocimene. This could result in the reported values being either higher or lower than the actual values.

This sample was prepared to obtain the highest accuracy of the Major analyte. Thus, the minor analyte results reported are subject to dilution effects and therefore possible variance.

Additions, Deviations & Exclusions:

None

It should be noted that NAFS will only analyze the sample/s received. This sample cannot be regarded as representative of entire batch or crop. It is the responsibility of the client to ensure a representative sample is taken in an appropriate tamper proof sample container. NAFS cannot be held liable for negligent handling, storage and transport of client samples, prior to receipt. Any complaints may be directed toward NAFS using info@nafs.co.za (QA005)

Quality Assurance Manager

Released By: Lindie Marais

Released On: 3/28/2024 9:38:08AM

This certificate of analysis shall not be reproduced except in full, without written approval of NAFS. The information contained in this communication from the sender is confidential. It is intended solely for use by the recipient and others authorized to receive it. If you are not the recipient, you are hereby notified that any disclosure, copying, distribution or taking action in relation of the contents of this information is strictly prohibited and may be unlawful. The results obtained may be used for anonymous statistical research purposes. NAFS cannot be held liable for any loss or damage arising from, directly or indirectly related to, sample test results.