

Certificate of Analysis

Sample ID: 220603-008-001
Retention Sample ID: 11 219
Client (Code) Name: (CAN0376) Mercurial (Pty) Ltd
Client Address: 25 Renosterkop, Nelspruit
Batch: 012201 (Cannabis Floss)
Date Receipt: 2022/06/03 13:08:20
Date Report Released: 2022/07/11 10:36:41
Sample Type: Plant Material
Package Condition: Intact
Received By: AWRBKA
Sample Amount: 2 gram
Tamper Proof: No

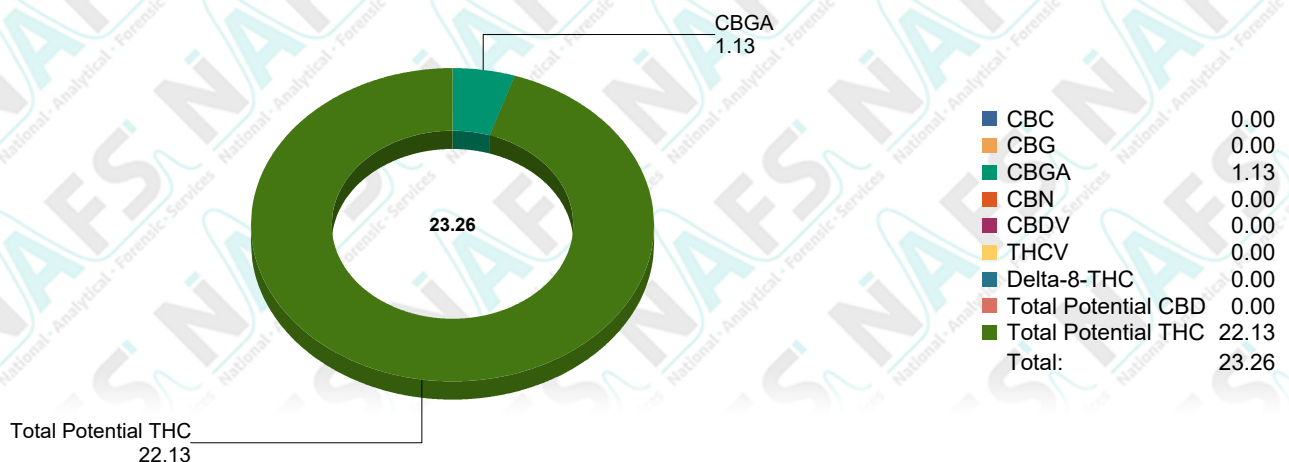


Test Name: TM006.3 (Potency Cannabis HPLC) (220603-008-001)

Specification: N/A
Test Method: *TM006.3
Sampling Method: SH007

Analyte	Results	*Std Dev.	*Spec Limits
CBC	ND % Weight	% Weight	N/A
CBD	ND % Weight	% Weight	N/A
CBD-A	ND % Weight	% Weight	N/A
CBD-V	ND % Weight	% Weight	N/A
CBG	ND % Weight	% Weight	N/A
CBG-A	1.132 % Weight	+ - 0.069 % Weight	N/A
CBN	ND % Weight	% Weight	N/A
Delta-8-THC	ND % Weight	% Weight	N/A
Delta-9-THC	1.284 % Weight	+ - 0.037 % Weight	N/A
THC-A	23.767 % Weight	+ - 0.221 % Weight	N/A
THC-V	ND % Weight	% Weight	N/A
Total Potential CBD	ND % Weight	% Weight	N/A
Total Potential THC	22.127 % Weight	+ - 0.232 % Weight	N/A

Analyst: PMYBURGH 2022/06/10 09:59



*ND (Not Detected)

*The current test method version is Validated

*Standard Deviation (Uncertainty of measurement of applicable duplicate sample)

*Specification Limits (Specified according to pharmacopeial or client specification limits where applicable)

Test Name: TM003.5 (Terpenes) (220603-008-001)

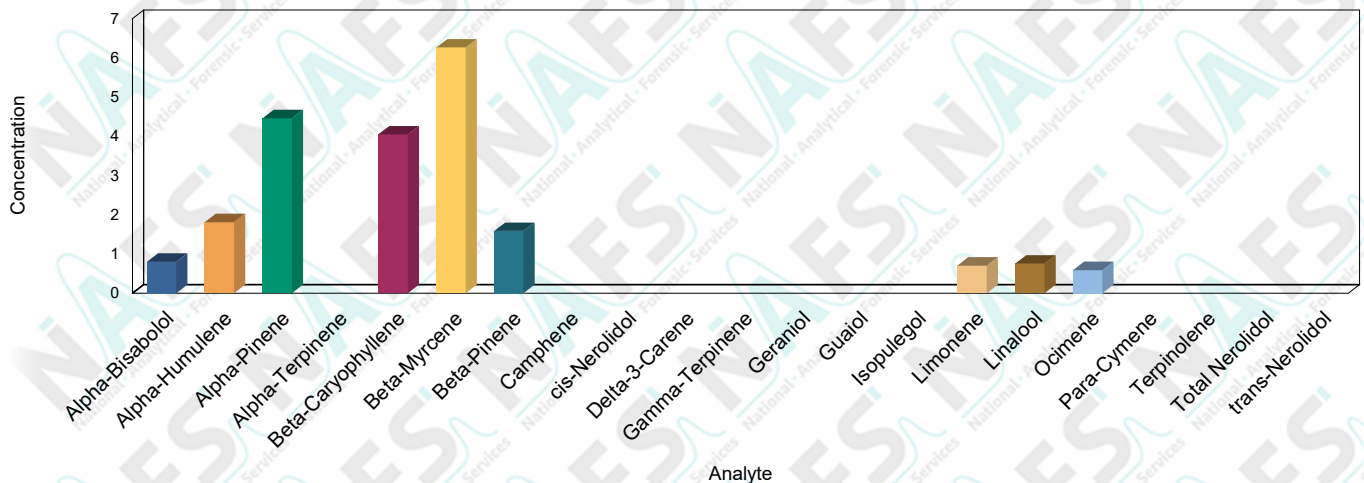
Specification: N/A

Test Method: *TM003.5

Sampling Method: SH007

Analyte	Results	*Std Dev.	*Spec Limits
Alpha-Bisabolol	0.802 mg/g	+ 0.186 mg/g	N/A
Alpha-Humulene	1.810 mg/g	+ 0.438 mg/g	N/A
Alpha-Pinene	4.459 mg/g	+ 0.493 mg/g	N/A
Alpha-Terpinene	ND mg/g	mg/g	N/A
Beta-Caryophyllene	4.049 mg/g	+ 1.000 mg/g	N/A
Beta-Myrcene	6.265 mg/g	+ 0.763 mg/g	N/A
Beta-Pinene	1.586 mg/g	+ 0.184 mg/g	N/A
Camphene	ND mg/g	mg/g	N/A
cis-Nerolidol	ND mg/g	mg/g	N/A
Delta-3-Carene	ND mg/g	mg/g	N/A
Gamma-Terpinene	ND mg/g	mg/g	N/A
Geraniol	ND mg/g	mg/g	N/A
Guaiol	ND mg/g	mg/g	N/A
Isopulegol	ND mg/g	mg/g	N/A
Limonene	0.704 mg/g	+ 0.034 mg/g	N/A
Linalool	0.755 mg/g	+ 0.047 mg/g	N/A
Ocimene	0.588 mg/g	+ 0.006 mg/g	N/A
Para-Cymene	ND mg/g	mg/g	N/A
Terpinolene	ND mg/g	mg/g	N/A
Total Nerolidol	ND mg/g	mg/g	N/A
trans-Nerolidol	ND mg/g	mg/g	N/A

Analyst: JLEYGONIE 2022/06/10 09:40



*ND (Not Detected)

*The current test method version is Validated

*Standard Deviation (Uncertainty of measurement of applicable duplicate sample)

*Specification Limits (Specified according to pharmacopeial or client specification limits where applicable)

Test Name: TM005.2 (Heavy Metal Class 1,2) (220603-008-001)

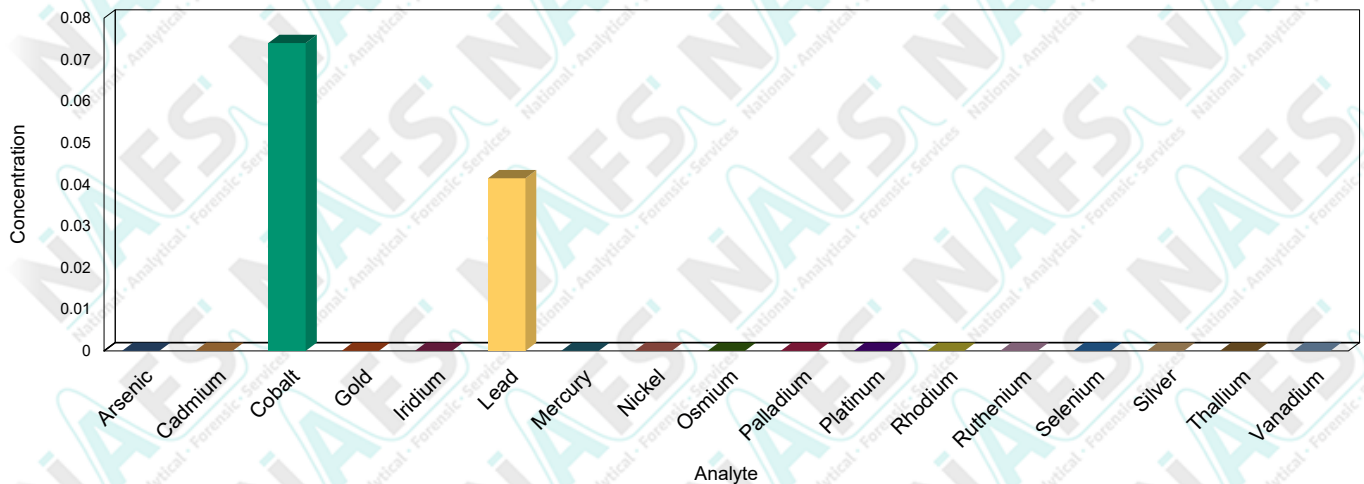
Specification: USP Specification (Inhalation)

Test Method: *TM005.2

Sampling Method: SH007

Analyte	Results	*Std Dev.	*Spec Limits
Silver	ND ppm	ppm	< 0.7 ppm PASS
Arsenic	ND ppm	ppm	< 0.2 ppm PASS
Gold	ND ppm	ppm	< 0.1 ppm PASS
Cadmium	ND ppm	ppm	< 0.2 ppm PASS
Cobalt	0.074 ppm	+ - 0.001 ppm	< 0.3 ppm PASS
Mercury	ND ppm	ppm	< 0.1 ppm PASS
Iridium	ND ppm	ppm	< 0.1 ppm PASS
Nickel	ND ppm	ppm	< 0.5 ppm PASS
Osmium	ND ppm	ppm	< 0.1 ppm PASS
Lead	0.042 ppm OR	+ - 0.001 ppm	< 0.5 ppm PASS
Palladium	ND ppm	ppm	< 0.1 ppm PASS
Platinum	ND ppm	ppm	< 0.1 ppm PASS
Rhodium	ND ppm	ppm	< 0.1 ppm PASS
Ruthenium	ND ppm	ppm	< 0.1 ppm PASS
Selenium	ND ppm	ppm	< 13 ppm PASS
Thallium	ND ppm	ppm	< 0.8 ppm PASS
Vanadium	ND ppm	ppm	< 0.1 ppm PASS

Analyst: AWRBKA 2022/06/10 11:38



*ND (Not Detected)

*The current test method version is Validated

*Standard Deviation (Uncertainty of measurement of applicable duplicate sample)

*Specification Limits (Specified according to pharmacopeial or client specification limits where applicable)

*OR (Outside Range) For quantitative analysis, calibration range is the concentration within which the analysis method is accurate. For limit tests the a single point calibration is employed with a range of +-15% across the specification limit. An OR analyte flag signifies that only semi-quantitative data has been reported.

Interpretations and Opinions:

The analyte trans-Nerolidol is indicated as ND as the concentration detected was below the LOQ. The analyte is possibly present within the sample but at a concentration that is not accurately quantifiable.

Additions, Deviations & Exclusions:

None

It should be noted that NAFS will only analyze the sample/s received. This sample cannot be regarded as representative of entire batch or crop. It is the responsibility of the client to ensure a representative sample is taken in an appropriate tamper proof sample container. NAFS cannot be held liable for negligent handling, storage and transport of client samples, prior to receipt. Any complaints may be directed toward NAFS using info@nafs.co.za (QA005)

Laboratory Manager

Released By: Henrick Viviers

Released On: 2022/07/11 10:36:41

This certificate of analysis shall not be reproduced except in full, without written approval of NAFS. The information contained in this communication from the sender is confidential. It is intended solely for use by the recipient and others authorized to receive it. If you are not the recipient, you are hereby notified that any disclosure, copying, distribution or taking action in relation of the contents of this information is strictly prohibited and may be unlawful. The results obtained may be used for anonymous statistical research purposes. NAFS cannot be held liable for any loss or damage arising from, directly or indirectly related to, sample test